

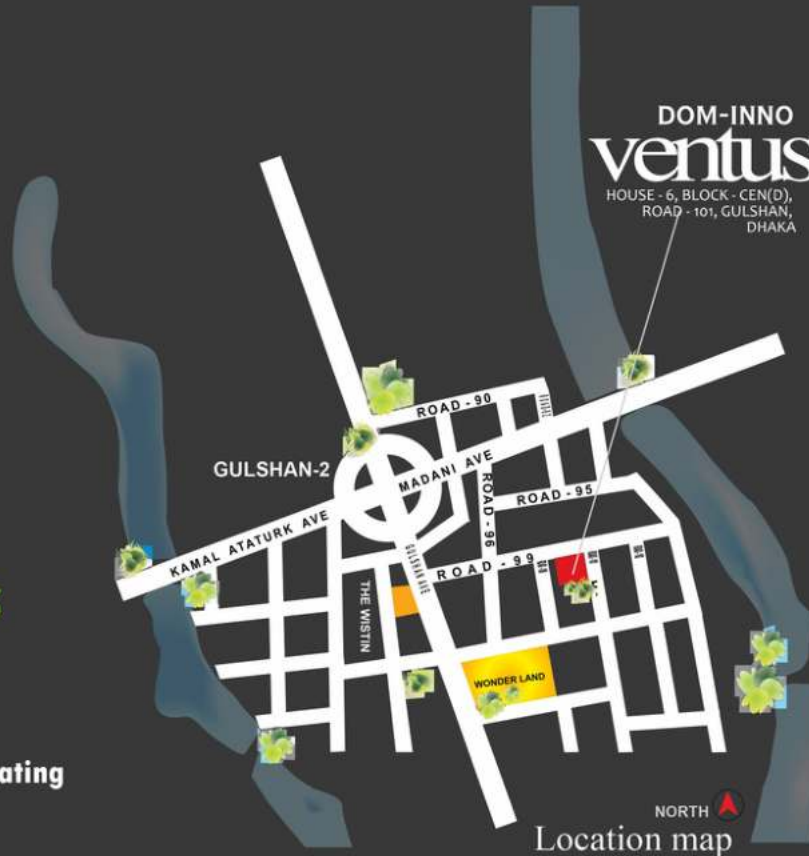
farida's
DOM-INNO
ventus



Gulshan 2

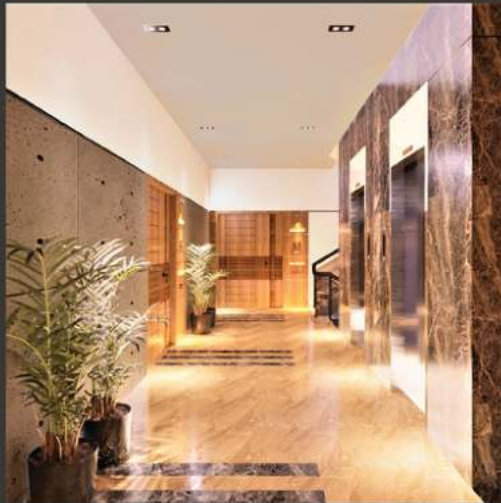
DOM-INNO ventus

HOUSE - 6, BLOCK - CEN(D),
ROAD - 101, GULSHAN,
DHAKA



Features

- Gymnasium
- Community hall
- Roof top open seating
- Swimming pool
- Green area for child play



DOM-INNO
creating inspiration.....



ROAD



ROAD

ROAD

farida's
DOM-INNO
 ventus

typical floor plan

A=B=C=2405sft

green space associated with living and dining area

DOM-INNO

amenities

Toilet Features

Commode and basin in all bathrooms except servant toilet (Cotto/Toto).
Bath tub (foreign) in master bath other bathroom will have tiled enclosed shower area.
Cabinet basin Marble countertop in master bath and 2nd bath.
Wall Tiles in all bathrooms up to full height (Foreign).
Floor tiles in all bathrooms (Foreign).
Basin mirrors of good quality with overhead lamp.
Good quality CP fittings i.e. Towel rail, Soap case, etc. in all bathrooms (Foreign).
Storage space over toilets with cat door/shutter.
Maid's toilet of RAK tiled floor with long pan and lowdown (Rak).
Concealed hot and cold water supply line in all bathrooms except maid bath.

Outside Paint

Exterior walls of Durocem/weather proof paint (Berger/Asian/Elite).

Kitchen

Double burner gas outlet over concrete platform covered with granite.
Wall Tiles up to ceiling heights in front of burner (Foreign).
Foreign (24 x24) Mirror polish Floor tiles.
One double bowl stainless counter-top steel sink with mixer.
Concealed hot and cold water lines.
Down Wash at kitchen verandah.
Exhaust fan.
Provision of kitchen hood.

Utility Connections

Water line connection from WASA.
Individual Double Burner Gas connection.
220/440V power connection.
Individual DESA meter for each apartment.

Sub-station

Transformer : As per requirement
Sub-Station: As per requirement,
Generator : AS per requirement.

Other inclusions

Engineering treatment in rooftop to protect from overheating.
Parapet wall of adequate height in rooftop.
Under ground water reservoir for 2 days and roof top water reservoir for 1 day water storage.
Fire extinguisher in each floor landing.
Central Gas geyser system.....



farida's
DOM-INNO
ventus



Doors

Decorative Teak Main Entrance Door (Ctg) with teak door frame including impressive door lock with handle, Security lock, Door Chain, Door knocker, Check Viewer, calling bell switch, brass/ chrome plate apartment no, etc.

Burma Teak veneered flush door shutters with doorframe for internal rooms. All internal doors with good quality round/cylindrical lock.

All internal door frames will be teak chamble (6 width).
Toilet door shutters inside laminated with doorframe. A comfortable foyer at the entrance in each apartment

Windows

4 BTA/Chunhya/Kai/Equivalent Aluminum Sliding Windows with 5 mm glass, mohair lining and rainwater barrier in aluminum section as per Architectural Design of the Building.

Mosquito net shutter in all windows and sliding door of verandah and strong safety grills in all windows with matching enamel paint.

Room Finishes

Foreign Tiles (24 x24) Mirror polish in all rooms and verandahs floor.

Plastic Paint in all internal walls and ceilings of soft colors (Berger/Asian/Elite).
French polish in doorframes & shutters.

Verandah Railing

Well architectural designed.

Electrical Features

Electrical cable in concealed PVC conduits. (BRB/Paradise)

MK type switches and sockets (ABB/ TCL/ Legrand/Equivalent).

Separate Electric distribution box with circuit breaker (ABB/Equivalent).

All power outlets with earth connection.

Provision for Air-conditioner in Master bed, 2nd bed and living room.

Telephone socket all bed & living room.

Suitable light point in Verandah.

Concealed intercom line.

Concealed satellite TV cable in Master bed, 2nd bed and living room.

Concealed internet line Master bed & 2nd bed.

Entrance door bell provision.

Light fixtures.

Power points for TV, Refrigerator, Deep Fridge, washing Machine, kitchen appliances, Ironing, Music set, electric Oven etc.



Architect
MD. ABDUS SALAM

Consultant
profile ltd.

DOM-INNO

**CORPORATE OFFICE:
DOM-INNO HOUSE**

House No - 13, Road No - 07,
Block- F, Banani, Dhaka- 1213

Phone : 09612119999
01885000300

DOM-INNO
creating inspiration.....



URS is a member of Registrar of Standards (Holdings) Ltd.

Disclaimer: All images and rendering are virtually done and the authority holds the exclusive right to change, modify or revise the designs or layouts for the aesthetic and technical endurance of the project.