

DOM-INNO

creating inspiration

Dom-inno House

House No - 136, Road No - 07, Block- F, Banani, Dhaka- 1213

TEL: +88-02-9871806-7, 9872167-9, 9871808-10

01819-410102 01817-143881
01817-044554 01817-044565
01811-481160

FAX: +88-02-8833982

E-MAIL: Sales@dominno-bd.com

WEBSITE: www.dominno-bd.com

Disclaimer: All images and rendering are virtually done and the authority hold the exclusive right to change, modify or revise the designs or layouts for the aesthetic and technical endurance of the project.



URS is a member of Registrar of Standards (Holdings) Ltd.

DOM-INNO

ESCAPARATE

House 136 . Shantinagar . Dhaka

DOM-INNO

ESCAPARATE



ARCHITECT
MD. ABDUS SALAM

CONSULTANT
profile ltd.

house 136 • shantinagar • dhaka



location map



& FEATURES AMENITIES

General Features

Building is planned and designed by professional Architects and structural Design Engineers.

For all service connections and disposals (sewerage, solid waste, etc.) BNBC building codes will be followed.

Structural design parameters will be based on American Concrete Institute (ACI) and American Standards of Testing Materials (ASTM) and BNBC codes.

AMENITIES OF THE APARTMENT:

DOORS:

Solid Decorative Chittagong teak Main Entrance Door.
Veneered Flush door Shutters (partex/equivalent).
Teak chambul internal Doorframes.
All Verandah Doors/siding aluminum with security sliding grill.

WINDOWS:

Aluminum Sliding Windows, mohair lining and rain water barrier in aluminium.
Safety Grills in all windows.

WALLS AND PARTITIONS:

Internal and external wall of 5" thick 1st class bricks.
Wall surfaces of smooth finished plaster.



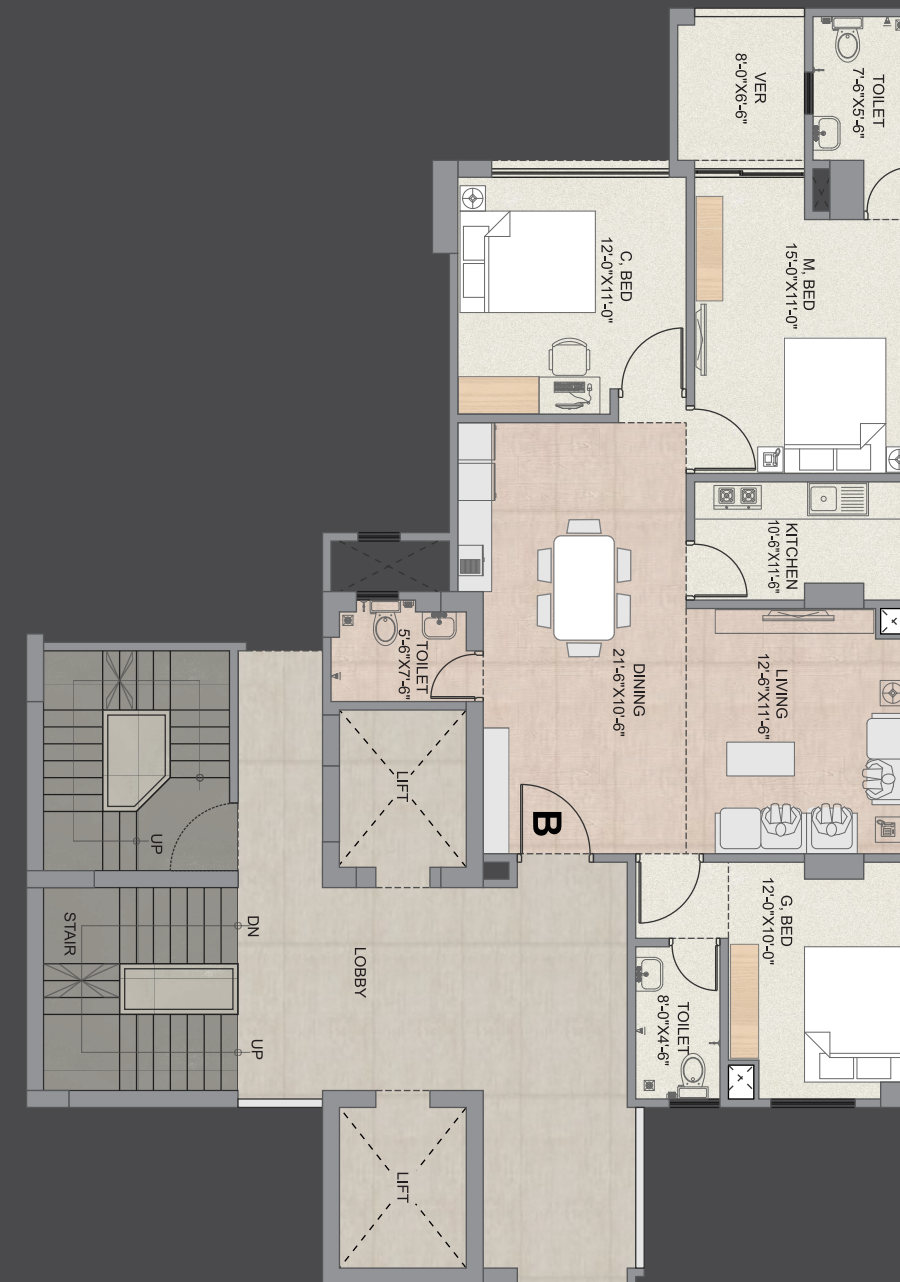
Typical FLOOR PLAN

apartment size

A
1490 SFT.



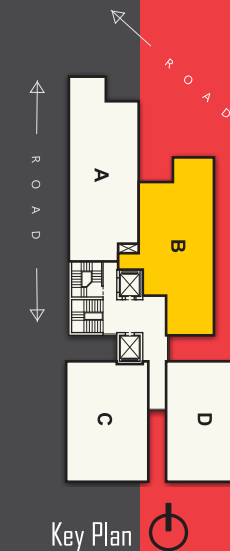
Key Plan



Typical FLOOR PLAN

apartment size

B
1490 SFT.



Key Plan

ROOM FINISHES:

Homogeneous floor Tiles in all rooms and verandahs.

Acrylic plastic emulsion Paint in all internal walls and on ceilings.

OUTSIDE PAINT:

Exterior walls of Weather coat paint/ cement paint (Berger/ Elite) as per architect's choice.

TOILET FEATURES:

RAK (Venice) commode, lowdown and pedestal basin in master and second bath.

Glazed wall Tiles in all bathrooms up to 7 feet

Good quality local made CP fittings

Good quality Soap cases, Paper holder and towel rails

Concealed hot & cold water line in bath. One bath tab in master bath.

KITCHEN:

Double burner gas outlet over concrete platform with homogenous tiles finished top

Glazed Wall Tiles upto 2.5 feet height in front of concrete platform

Homogenous Floor tiles (RAK/ equivalent)

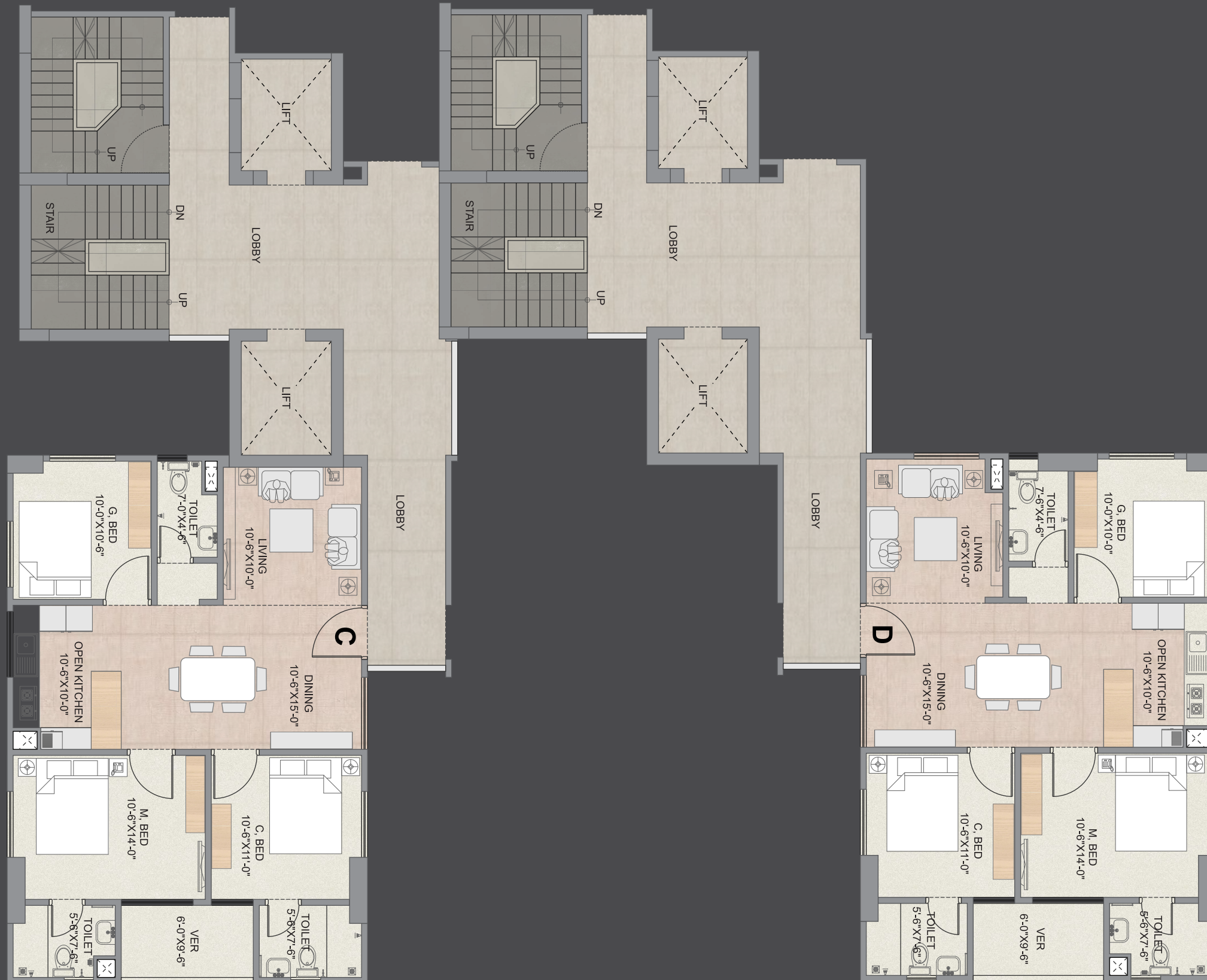
Good quality stainless steel sinks with mixer.

ELECTRICAL FEATURES:
 MK type (ABB/Equivalent) electric switches and sockets.
 Separate Electric distribution box for each apartment.
 All power outlets with earth connection.
 Provision for Air-conditioner in Master Bed and 2nd Bed.
 Telephone socket in Master bed, 2nd bed and living/
 F.living.
 Concealed intercom line at suitable Location.
 Concealed satellite TV/dish cable in the living/F.living and
 Master bedroom.

COMMON FACILITIES OF THE COMPLEX

Building Entrance:
 Secured decorative main gate as per the elevation &
 perspective of the building.
 Attractive Apartment Logos with plantation.
 Comfortable internal driveway.
 Separate Mailbox.
 Guard post.
 Guard accommodation
 Toilet, kitchen, Drivers waiting space at ground floor

Reception Lobby:
 Impressive reception desk with intercom set.



Lift Lobbies & Staircase:
 Spacious lift Lobby in each floor.
 Special Floor tiles in all lift lobbies and staircase with
 proper lighting system
 Fire extinguisher in each lobby.

LIFT:
 Imported passenger lift of adequate passengers
 capacity

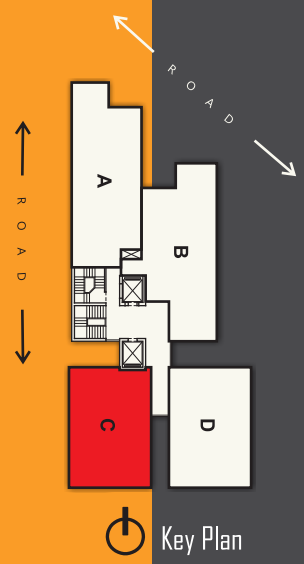
Roof Top/Ground floor:
 Children play area.
 Cloth drying area.
 Community space with toilet & kitchenette.
 Roof top finish considering water proofing and heat
 protection.

Utility Connections (At Actual):
 Water line connection from WASA.
 Individual double burner gas connection.
 220/440 v power connection.
 Individual DESA meter for each apartment

Other inclusions:
 Water pump of adequate capacity / stand by pump.
 Sub station (if required).
 Generator of adequate capacity.
 Emergency electric supply through generator for
 lighting in common spaces.

Typical FLOOR PLAN

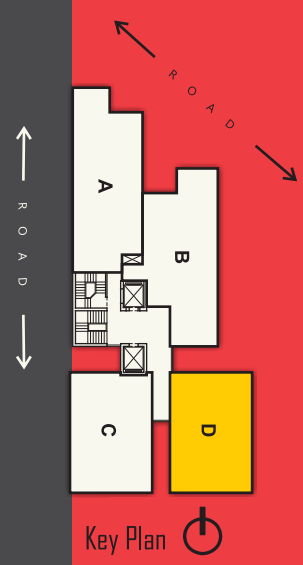
apartment size
C
1285 SFT.



Key Plan

Typical FLOOR PLAN

apartment size
D
1285 SFT.



Key Plan