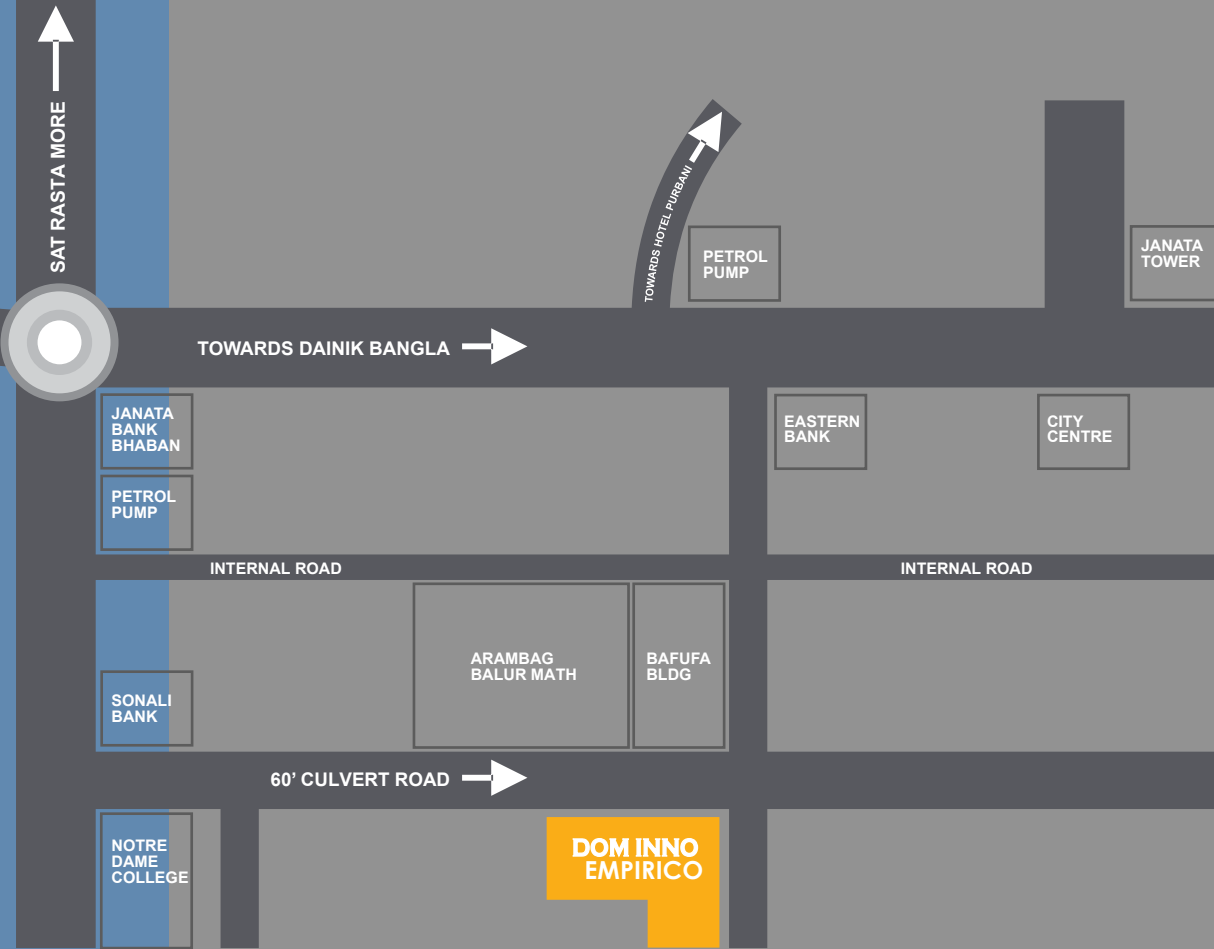


# DOM-INNO EMPIRICO



ARAMBAGH, DHAKA

house 27/1-5,  
ARAMBAGH, DHAKA



# FEATURES & AMINITIES

## GENERAL FEATURRES:

Building is planned and designed by professional Architects and Structural Design Engineers.  
For all service connections and disposals (sewerage, solid waste, etc.) BNBC building codes will be followed.

## COMMON FACILITIES OF THE COMPLEX:

**Building Entrance:**  
Secured decorative main gate as per the elevation and perspective of the building.  
**Attractive Apartment Logos with plantation.**  
**Comfortable internal driveway. Mailbox.**  
**Guard post.**  
**Guard accommodation.**  
**Toilet, kitchen, drivers waiting space at ground floor.**

**Reception Lobby:**  
Impressive reception desk with intercom set.

**Lift Lobbies & Staircase:**  
Spacious lift lobby in each floor.  
Fire extinguisher in each lobby.

**LIFT:**  
Imported passenger lift of adequate passengers capacity.

**Roof Top/Ground floor:**  
Children play area.  
Cloth drying area.  
Community space with toilet and kitchenette.  
Roof top finish considering water proofing and heat protection.

## Utility Connections (At Actual):

Water line connection from WASA.  
Individual double burner gas connection.  
220/440 v power connection.  
Individual DESA meter for each apartment.  
**Other inclusions:**  
Water pump of adequate capacity / stand by pump.  
Sub station (if required).  
Generator of adequate capacity.

### TYPE - A

01.MASTER BED	12'-6"X11'-6"
02.MASTER TOILET	6'-6"X 5'-6"
03.CHILD BED	11'-0"X11'-6"
04.CHILD TOILET	6'-6"X 5'-6"
05. VERANDAH	11'-0"X 6'-0"
06. GUEST BED	11'-0"X10'-6"
07.COMMON TOILET	7'-6"X 4'-6"
08.LIVING	12'-6"X10'-6"
09.DINING	16'-0"X10'-6"
10.KITCHEN	7'-6"X 6'-0"

### TYPE - B

01.MASTER BED	12'-6"X11'-6"
02.MASTER TOILET	6'-6"X 5'-6"
03.CHILD BED	11'-0"X11'-6"
04.CHILD TOILET	6'-6"X 5'-6"
05. VERANDAH	11'-0"X 6'-0"
06. GUEST BED	11'-0"X10'-6"
07.COMMON TOILET	7'-6"X 4'-6"
08.LIVING	12'-6"X10'-6"
09.DINING	16'-0"X10'-6"
10.KITCHEN	7'-6"X 6'-0"

### TYPE - C

01.MASTER BED	12'-6"X11'-6"
02.MASTER TOILET	6'-6"X 5'-6"
03.CHILD BED	11'-0"X11'-6"
04.CHILD TOILET	6'-6"X 5'-6"
05. VERANDAH	11'-0"X 6'-0"
06. GUEST BED	11'-0"X10'-6"
07.COMMON TOILET	7'-6"X 4'-6"
08.LIVING	12'-6"X10'-6"
09.DINING	16'-0"X10'-6"
10.KITCHEN	7'-6"X 6'-0"

### TYPE - D

01.MASTER BED	12'-6"X11'-6"
02.MASTER TOILET	6'-6"X 5'-6"
03.CHILD BED	11'-0"X11'-6"
04.CHILD TOILET	6'-6"X 5'-6"
05. VERANDAH	11'-0"X 6'-0"
06. GUEST BED	11'-0"X10'-6"
07.COMMON TOILET	7'-6"X 4'-6"
08.LIVING	12'-6"X10'-6"
09.DINING	16'-0"X10'-6"
10.KITCHEN	7'-6"X 6'-0"



KEYPLAN



typical floor plan

Type **A** : 1240



typical floor plan

Type **B** : 1240



typical floor plan

Type **C** : 1240



typical floor plan

Type **D** : 1240



### TYPE - E

01.MASTER BED	12'-6"X11'-6"
02.MASTER TOILET	6'-6"X 5'-6"
03.CHILD BED	11'-0"X11'-6"
04.CHILD TOILET	6'-6"X 5'-6"
05. VERANDAH	11'-0"X 6'-0"
06. GUEST BED	11'-0"X10'-6"
07.COMMON TOILET	7'-6"X 4'-6"
08.LIVING	12'-6"X10'-6"
09.DINING	16'-0"X10'-6"
10.KITCHEN	7'-6"X 6'-0"

### TYPE - F

01.MASTER BED	12'-6"X11'-6"
02.MASTER TOILET	6'-6"X 5'-6"
03.CHILD BED	11'-0"X11'-6"
04.CHILD TOILET	6'-6"X 5'-6"
05. VERANDAH	11'-0"X 6'-0"
06. GUEST BED	11'-0"X10'-6"
07.COMMON TOILET	7'-6"X 4'-6"
08.LIVING	12'-6"X10'-6"
09.DINING	16'-0"X10'-6"
10.KITCHEN	7'-6"X 6'-0"

### TYPE - G

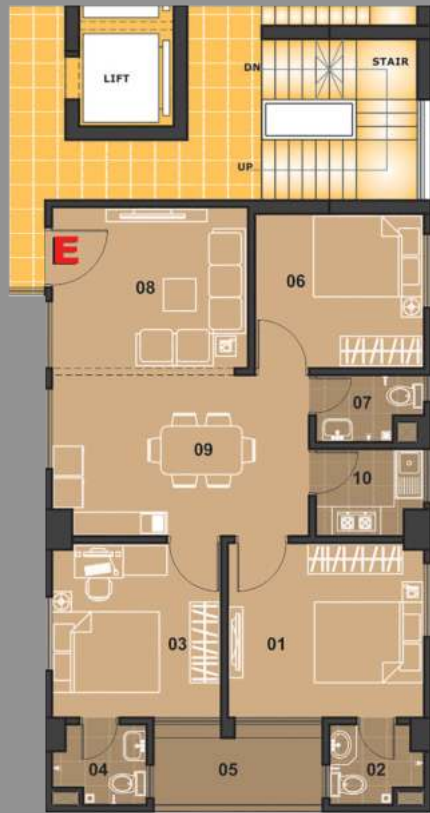
01.MASTER BED	11'-6"X12'-6"
02.MASTER TOILET	6'-6"X 5'-6"
03.CHILD BED	11'-0"X12'-6"
04.CHILD TOILET	6'-6"X 5'-6"
05. VERANDAH	9'-6"X 6'-0"
06. GUEST BED	11'-0"X11'-0"
07.COMMON TOILET	7'-6"X 4'-6"
08.LIVING	11'-6"X11'-0"
09.DINING	15'-0"X10'-6"
10.KITCHEN	7'-6"X 6'-0"

### TYPE - H

01.MASTER BED	14'-0"X10'-6"
02.MASTER TOILET	7'-6"X 4'-6"
03.CHILD BED	12'-0"X10'-6"
04.CHILD TOILET	7'-6"X 4'-6"
05. VERANDAH	11'-0"X 6'-0"
06. GUEST BED	12'-0"X 9'-0"
07.COMMON TOILET	8'-0"X 4'-6"
08.LIVING	14'-0"X 9'-0"
09.DINING	18'-0"X10'-6"
10.KITCHEN	8'-0"X 5'-6"



KEYPLAN



typical floor plan

Type **E** : 1240



typical floor plan

Type **F** : 1240



typical floor plan

Type **G** : 1240



typical floor plan

Type **H** : 1240



# DOM-INNO

**Corporate Office:**  
**DOM-INNO HOUSE**

House# 13, Road# 7  
Block# F, Banani  
Dhaka-1213

**Email:**

[sales@dominno-bd.com](mailto:sales@dominno-bd.com)

**Contact:**

**09612119999**

**01885000300**

[www.dominno-bd.com](http://www.dominno-bd.com)

Architect:

Md. Abdus Salam

Consultant:

**profile ltd.**  
architects and engineers



URF is a member of Institute of Chartered Builders of U.K.

CERTIFICATE NO. 32418 Issue No. 1

**ISO 9001:2008**  
**CERTIFIED**